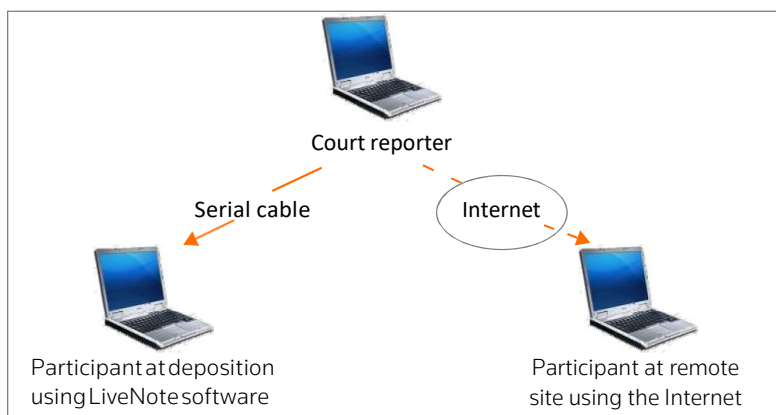


LiveNote™ Stream Manager: Setting Options

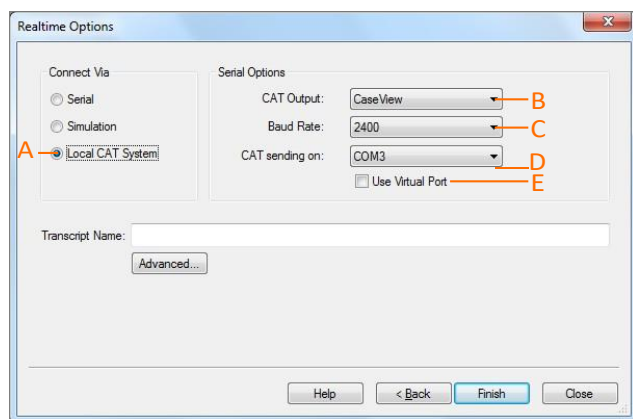
Stream Manager and CAT Software on Same Computer: Using a Serial Connection and the Internet (Recommended)

- Stream Manager and CAT software are installed on the same computer.
- One participant is connecting from the deposition using a serial cable.
- One participant is connecting from a remote site using the Internet.



You must access the CAT system and LiveNote Stream in the following order:

1. Access the CAT system.
2. Note the baud rate and COM port number that are used for the session.
3. Close the CAT system.
4. Access LiveNote Stream.
5. Set the options in the Realtime Options dialog box as shown below.
6. Re-access the CAT system.



- A Click **Local CAT System** when Stream Manager and CAT software are installed on the same computer.
- B In the **CAT Output** list, click **CaseView**.
- C In the **Baud Rate** list, click the same rate that is set in the CAT system.
- D In the **CAT sending on** list, click the same COM port that is set in the CAT system.
- E Do **not** click the Use Virtual Port check box when a participant is using a serial cable.

For assistance using Westlaw Case Notebook call 1-800-290-9378 or e-mail westlaw_software.support@thomsonreuters.com.

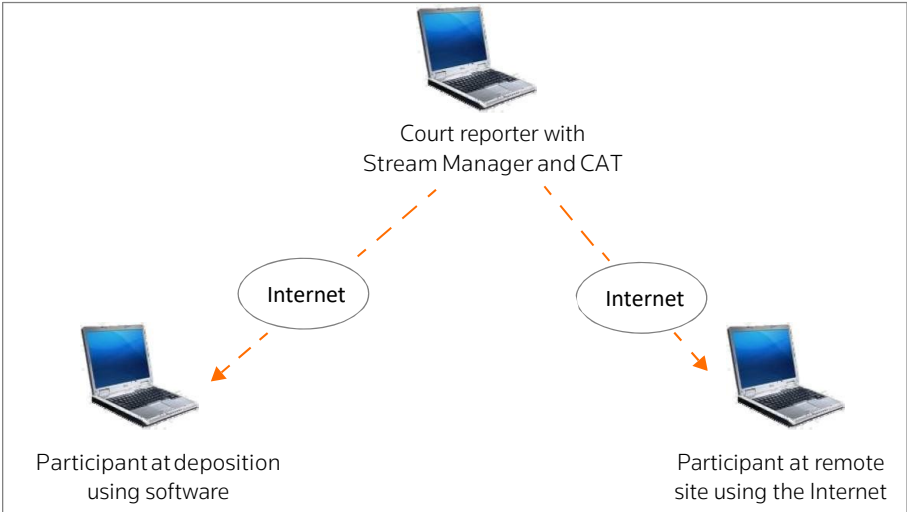
For free reference materials, visit store.westlaw.com/westlaw/guides.

**THOMSON
 REUTERS
 WESTLAW**

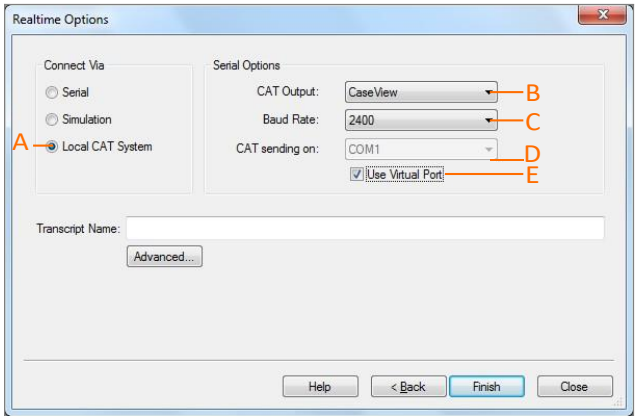
Thomson Reuters Westlaw comprises industry leading online research, print products, software, tools, and services that help legal professionals perform their work faster and more efficiently, every day.

Stream Manager and CAT Software on Same Computer: Using Internet Connections Only

- Stream Manager and CAT software are installed on the same computer.
- One participant is connecting from the deposition via the Internet using Westlaw Case Notebook or LiveNote software.
- One participant is connecting from a remote site using the Internet.



Access LiveNote Stream before you access the CAT system. Set the options in the Realtime Options dialog box as shown below:

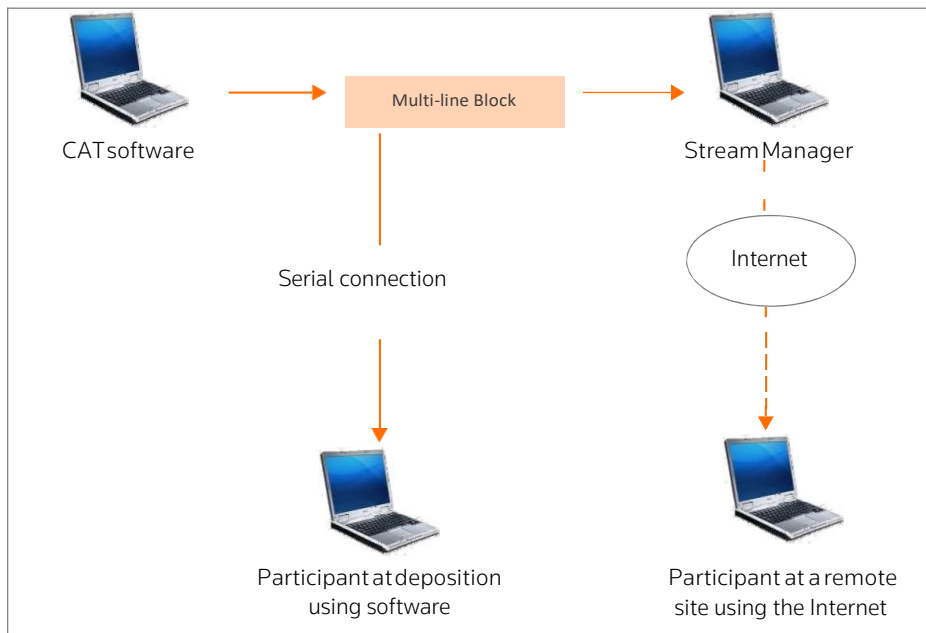


- A Click **Local CAT System** when Stream Manager and CAT software are installed on the same computer.
- B In the **CAT Output** list, click **CaseView**.
- C In the **Baud Rate** list, click the same rate that is set in the CAT system.
- D Stream Manager automatically chooses the COM port. Set your CAT software's Output field to the same COM port displayed in the CAT sending on box.
- E Select the **Use Virtual Port** check box when all participants are using the Internet.

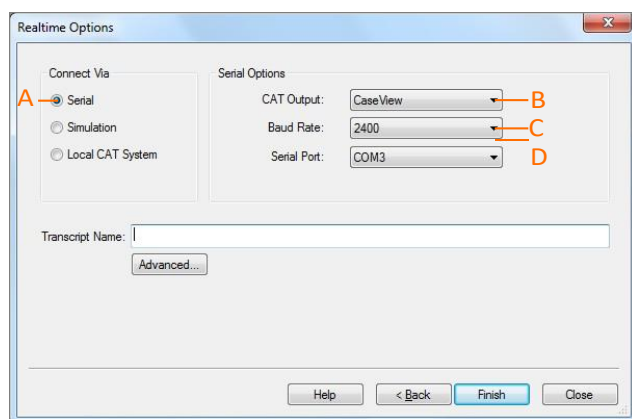
Stream Manager and CAT Software on Separate Computers: Using a Serial Connection and the Internet

If you are using Stenocast or wireless equipment, Stream Manager and CAT software must be installed on separate computers, as described below.

- Stream Manager and CAT software are installed on separate computers.
- One participant is connecting from the deposition using a serial connection.
- One participant is connecting from a remote site using the Internet.



Set the options in the Realtime Options dialog box as shown below:



- A Click **Serial** when Stream Manager and CAT software are installed on separate computers.
- B In the **CAT Output** list, click **CaseView**.
- C In the **Baud Rate** list, click the same rate that is set in the CAT system.
- D In the **Serial Port** list, click the same COM port that is set in the Stream Manager computer receiving the real-time feed.